

# Self/5000

## Compact, engaging and scalable all-in-one payment solution for your self-service business

- Accept all payment methods including magstripe, EMV and NFC/Contactless and QR codes
- Improve the customer experience with the best-in-class self-service solution that offers a color touchscreen, camera and sound alerts
- Simplify solution integration, operation and scalability
- Cut complexity in payment security implementation as a result of a full PCI PTS v5 configuration



Part of the new Self series range, the Self/5000 is an “all-in-one” device with a color touchscreen that equips vending machines and kiosks for secure payment acceptance.

#### Highest security and easy PIN entry

Fully PCI PTS 5.x compliant, the Self/5000 meets the highest and latest hardware and software mandatory requirements. It also complies with SRED and provides flexible options with add-on modules and open APIs.

The virtual keyboard displayed on the screen makes entering the PIN easier.

#### All payment methods

The Self/5000 accepts all payment methods including magstripe, EMV and contactless. In addition, the device facilitates scanning for alternative payment methods including QR codes, etc..

The card reader has a customizable RGB light input which facilitates user guidance and reinforces the level of security.

#### Simple UI with sound alerts

The solution provides a simple and easy-to-use customer interface with the color display and an embedded mechanical keyboard. By connecting an external speaker to the Self/5000, the device supports sound alerts for enhanced usability.

#### Highly ruggedized

Thanks to its robust design (IK09) and protection against water (IP44) the Self/5000 stands up to the most demanding indoor and outdoor environments and a wide variety of adverse environmental conditions.

#### Easy integration & solution flexibility

Due to its compact size and design, the Self/5000 can be easily integrated into a vending or kiosk machine. It is also compliant with the EVA SDM standard and can easily replace the older solutions.

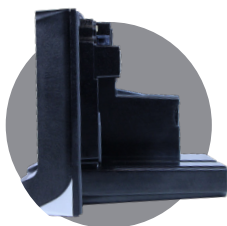
With the addition of multi-drop-bus (MDB) connectors (for vending or parking meters and other use cases), Bluetooth, 4G connectivity, the Self/5000 extends its capabilities and enables you to add optional modules to enhance flexibility.

#### Seamless estate management

The Self/5000 works seamlessly with Ingenico's estate management solution allowing integrators & operators to easily use and maintain the fleet of devices without complexity. It also allows them to remotely perform software updates and deliver day-to-day support for a hassle-free experience

#### Protect your investment

Ingenico's software components for self-service solutions from Telium 2 (including the MDB, EXE vending protocols, etc.) are compatible to work with the Self Series and its TETRA platform to facilitate the continuity of current business and scale further.



<b>Processor</b>	Application & Crypto processor	Cortex A5	●
<b>Memory</b>	Internal External	512 MB Flash, 512 MB RAM MicroSD up to 32GB	● ●
<b>OS</b>		Telium TETRA	●
<b>SAM</b>		2 SAM ID-000	●
<b>Card Readers</b>	Contactless Smart Card Magstripe Hybrid card reader (horizontal insertion) Shutter	EMV Level 1 compliant / ISO 14443 A/B/B' EMV Level 1 / 500k lifetime reads ISO 1/2/3, 500k lifetime reads Utilizes RGB backlighted LEDs to help prevent device tampering Prevents dust and other non-card materials from entering the reader	● ● ● ● ●
<b>Display</b>	Color touchscreen	3.26" backlit, QVGA portrait mode (240x320)	●
<b>Keypad</b>	Virtual	PIN on Screen (on-line cless, on-line / off-line contact)	●
<b>Audio</b>	Buzzer Polyphonic sound (WAV files)	Mono Via external loudspeaker (not provided)	● ●
<b>Camera</b>	In front of the device	2MP - fixed focal (Honeywell barcode scanning library embedded)	●
<b>Terminal Connectivity</b>	Wired Wireless (in slot #2)	Ethernet 10/100, 1xRJ45 4G Bluetooth	● Optional Optional
<b>Terminal Connections</b>	USB Serial Sound MDB	1 x USB Slave (USB-B connector) 2 x USB Host (USB-A connector) 2 x RS232 (RJ11 connector) 1 x 2 PIN connector for external loudspeaker 1x MDB Master + 1x MDB Slave	● ● ● ● Optional
<b>Power Supply</b>	External power supply Power & MDB module (in slot #1)	9-16 V DC - 2 PIN connector 10-45V DC	● Optional
<b>Terminal Size</b>	EVA standard Overall W x H x D inches	SDM EVA 3.35 x 4.21 x 4.31" (85 x 107 x 109.6 mm)	Optional ●
<b>Weight</b>		620 g (22oz)	●
<b>Environment</b>	Operating temperature Storage temperature Operating humidity	-4°F to 158°F (-20°C to +70°C) -4°F to 158°F (-20°C to +70°C) 95% non-condensing at 131°F (+55°C)	● ● ●
<b>Material</b>	Plastic	Compliant fire & smoke standard (EN 45 545-2)	●
<b>IP</b>	Ingress protection	IP44	●
<b>IK</b>	Shock protection	IK09	●
<b>Accessories</b>		2 PIN to 6 PIN adaptor cable for standard PSU EVA mounting plate USB cables, serial cables PSU	● ● Optional Optional
<b>Security</b>		PCI PTS 5.1 certified (No commissioning required)	●



UCP Inc.  
www.ucp-inc.com

Tel.702-802-3504 Email.  
info@ucp-inc.com

7200 W Post Rd Suite 100, Las Vegas, NV, 89113