

Open/1500

Stealthy, powerful and scalable contactless module to fit any transport project



- Designed for Open Payment by meeting transport & payment requirements
- Integrated easily & sleekly in plastic embedded validator (bus, tramway, train, ferries...)
- Complies with transport & payment standards thanks to a dedicated compliant contactless reader
- Enable new use cases such as contactless tickets, mobiles or IoT and closed-loop card



The best of transport and payment worlds to meet all your Open Payment requirements.



All contactless payment methods supported

- Close loop cards (Mifare®, Desfire®...) and contactless tickets
- Payment method (Visa, Mastercard, Amex) including transit versions

Easy mechanical integration and maintenance:

- Flush and stealthy integration in a bus, a tramway, a train or a ferry in validators, kiosks or driver consoles (plastic casing)
- Compact form factor

Highest level of security with PCI PTS certification

Transportation version

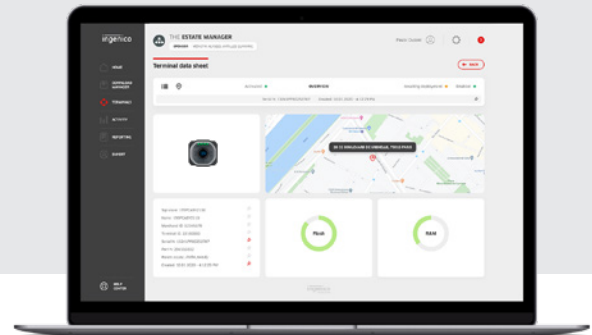
- Compliant with automotive and railways standards
- Additional removable battery to preserve internal battery during all reader lifetime

Consumer version

- Fit for toll, access control, EV charging
- Power Over Ethernet for an easy integration

Supported by Ingenico's suite of services

- Fleet management & security solutions
- Hardware services
- Professional services



Processor / OS	• Cortex A5 - Telium TETRA	✓
Memory	• 512 MB Flash, 512 MB RAM • MicroSD up to 32GB	✓ ✓
SAM	• 4xSAM ID-000 ISO 7816 (High Speed protocol)	✓
Contactless reader	• EMV Level 1 / ISO 14443 A/B/B' • ISO 18 092 (reader mode)	✓ ✓
User interface	• RVB backlit landing zone • 4 RVB LEDs	✓ ✓
Audio	• Buzzer Monotone • Polyphonic sound with external loudspeakers	✓ ✓
Terminal connectivity	• Ethernet 10/100, 1 x RJ45 LAN port	✓
Terminal connections	• 1 x USB Slave • 2 x USB Host • 2 x RS232 • I/O isolated ports (2 x inputs + 2 x outputs) • 1 x 2 PIN connector for external loudspeaker	✓ ✓ ✓ ✓ ✓
Power supply	• 12V - 24V DC • Sleep mode	✓ ✓

Security	• PCI PTS 5.1 certified	✓
IP	• IP 65	✓
IK	• IK 10	✓
Terminal size	• 75.5 (W) x 72 (H) x 37(D) mm (2.9x2.8x1.5")	✓
Weight	• 134 g (4.7oz)	✓
Operation conditions	• Relative humidity: 95% non-condensing at 40°C • External temperature range: -20°C to +70°C (-4°F to 158°F) for consumer product • External temperature range: -20°C to +55°C (-4°F to 131°F) for transportation (automotive, railways) product	✓ ✓ ✓
Storage conditions	• 95% non-condensing at 55°C • External temperature range: -20°C to +70°C (-4°F to 158°F)	✓ ✓
Accessory	• Plastic piece for rounding the landing zone (cabochon) • 6 points to 2 points connector adapter (for 12V PSU)	✓ ✓
Specific to transportation version	• Additional removable battery to avoid any internal battery change during the product's lifetime	✓
Specific to consumer version	• LAN with Power over Ethernet (PoE) – up to 48V DC	✓



UCP Inc.
www.ucp-inc.com

7200 W Post Rd Suite 100, Las Vegas, NV, 89113

Tel.702-802-3504 Email.
info@ucp-inc.com

